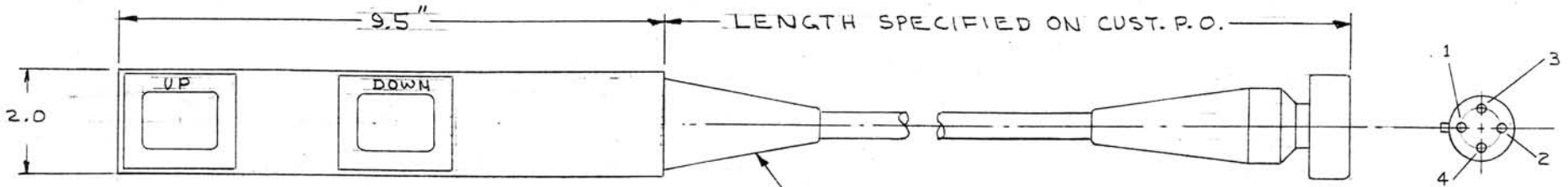
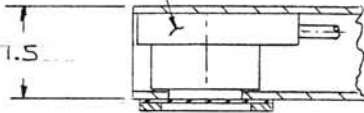
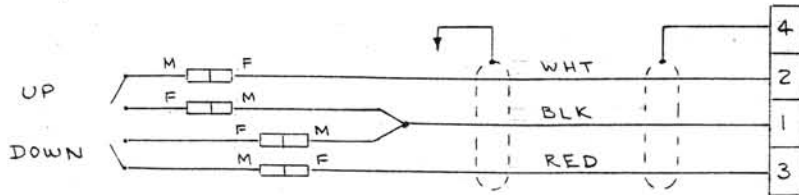


SUBMERSIBLE SWITCH,
P/N 1809-100.
2 PLACES. (REF.)

ELECTRICAL: FORM A, SPST, NORMALLY OPEN.
SWITCHING VOLTAGE: 500 VOLTS MAX.
SWITCHING CURRENT: 2 AMP MAX.
CONTACT RATING: 50 WATTS MAX.
CARRY CURRENT: 3 AMP MAX.



CABLE ASSY P/N 1810-002 (REF.)
CABLE: MIL-C-915, P/N TSS-3
CONNECTOR: MIL-C-24231, P/N M24231/1-002.



WIRING DIAGRAM

DIMENSIONS ARE
IN INCHES.

CAGE CODE	HYDRACON COMPANY, INC.		
	PO Box Anaheim, CA		
SCALE: 1/2	APPROVED BY:	VAP 5-13-98	DRAWN BY
DATE: 1-31-98			
PENDANT ASSY			
	REV. F	DRAWING NUMBER 1810-100	